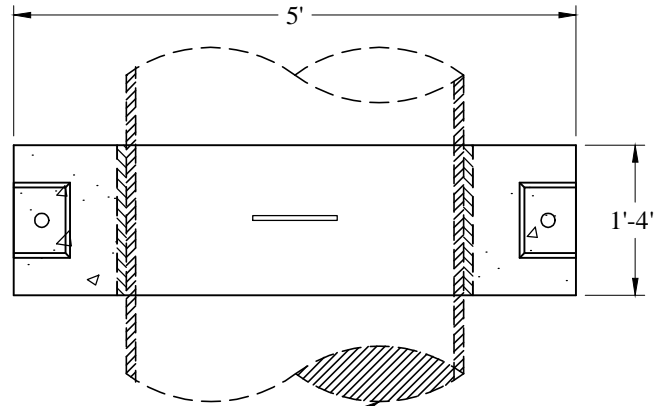


1-800-639-2199

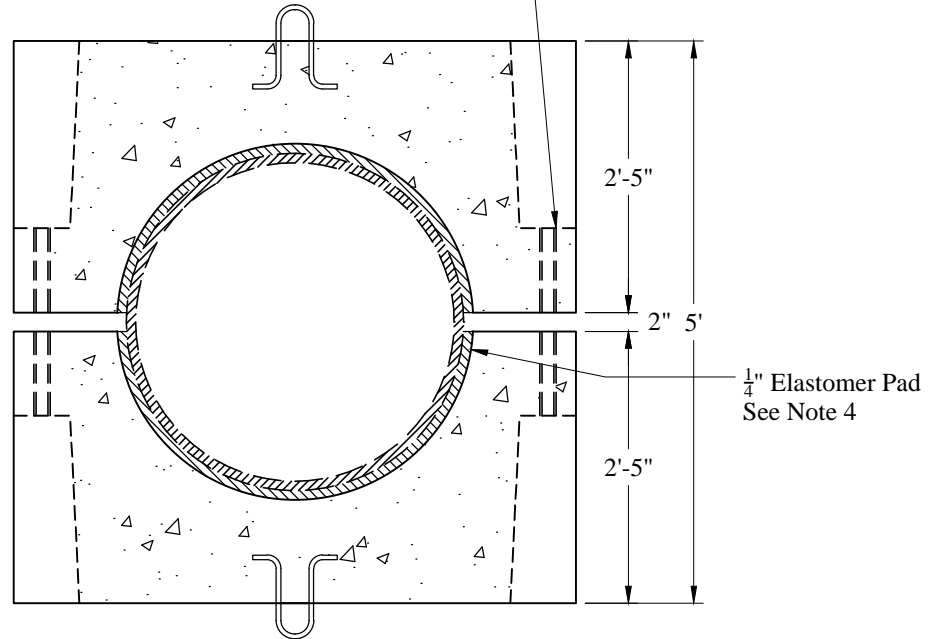
Fax (603) 224-2927

Pipe Collars\Pipe Anchor Collar Type IV (v)



Pipe Size Per Contract Specification

1 1/4" PVC Sleeve
Cast In 4 Places



1/4" Elastomer Pad
See Note 4

General Notes

1. Concrete: $f_c = 5,000$ psi @ 28 Days Minimum. Type III Portland Cement, 5% to 8% Entrained Air. Water /Cement Ratio Not to Exceed 0.44
2. Steel Reinforcement Conforms to Latest ASTM Specification: ASTM A-615 Grade 60 Black Deformed Bars 3" Minimum Cover
3. Anchor Bolts, Nuts, & Washers are 316 Stainless Steel or Galvanized
4. Supplied with 2 Pieces Commercial Grade Neoprene Rubber (per Side) 1,000 psi Tensile Strength, Black, Shore A50 Durometer Hardness
5. Maximum Pipe OD for This Anchor is 36"
6. Weight Estimate is Based on Hole Sized for Maximum Pipe OD
7. To Be Assembled by Contractor

Est Weight:

Top: 1,500 Lbs
 Bottom: 1,500 Lbs
 Total: 3,000 Lbs

Phoenix
Precast
Products

Pipe Anchor Collar
Type IV

P/N: PAC-TYPE4

Concord, NH 03301

Phoenix Precast Products

Phoenix Precast Products